



Veterinary instruments

 Keeler
Focused on you

Why choose Keeler for reliable diagnostics and exceptional optics?

When it comes to the all-important eye care of animals, we pride ourselves on offering over 100 years of ophthalmic industry experience, technology, and innovation.

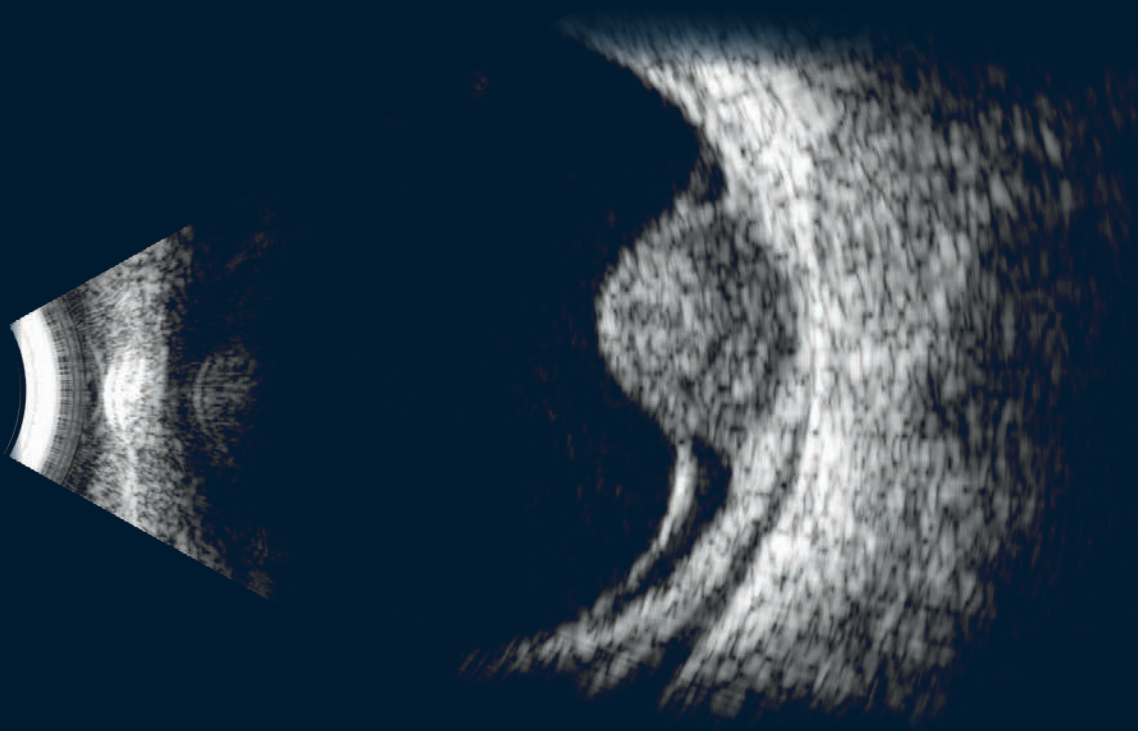
Discover our range of portable slit lamps, tonometers, indirect ophthalmoscopes and ultrasound equipment, all designed to help veterinarians make a prompt and reliable diagnosis with confidence, to better help our furry, feathered, and four-legged friends.

Focused on you

At Keeler we understand that your number one priority is the health of your animals, or the pets of your patients.

Our priority is to support you with industry-defining quality in optics, imagery, accuracy and the build quality you need at the value you want.

And because we know that everyone needs a little more help from time-to-time, our unrivalled customer and technical support teams are ready whenever you need them.



Contents

Portable slit lamps	4
Binocular indirect ophthalmoscopes	6
Ophthalmic ultrasound	8
Handheld diagnostic sets	10
Tonometry	10
Cryo surgery	11





**Leading the way
in ophthalmic
diagnostic
equipment for
veterinarians**

Precision and durability



PSL Classic

Excellence in optics, versatility and portability

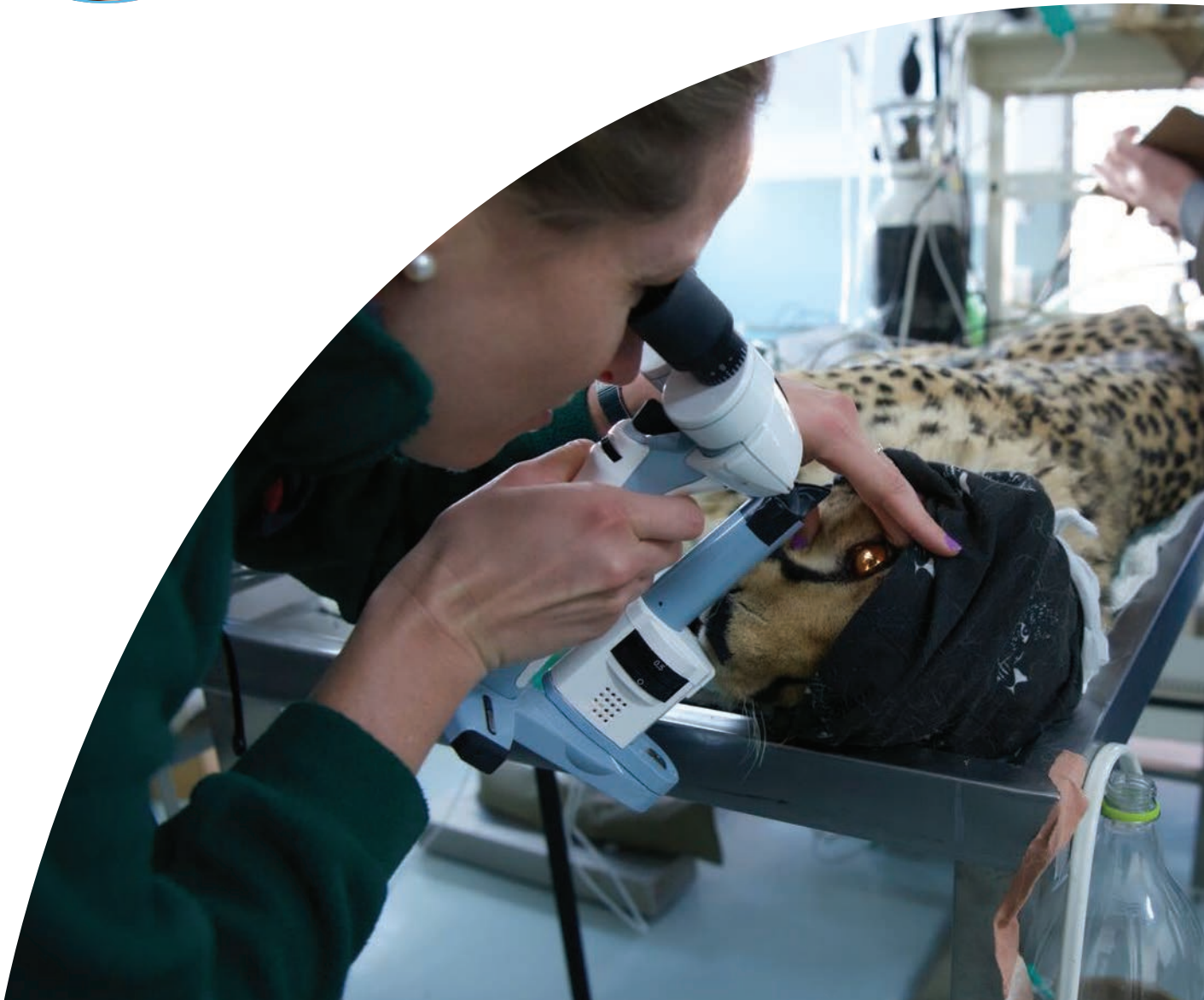
Featuring a stylish and contemporary ddesign, our PSL Classic is lightweight, durable and robust. It is designed and manufactured to withstand the demanding conditions of a veterinary environment.

Setting the highest standards for portable slit lamps, our PSL Classic comes with unique features and greater mobility so you can take your slit lamp to the farm or on a house visit with ease.

Features:

- Precision optics, portable usability
- 10x & 16x magnification for greater acuity
- Controllable illumination from maximum to zero
- 1mm Square aperture for Uveitis assessment
- Continuously variable LED illumination
- Fixation targets

3010-P-2000



Diverse, high-quality, binocular indirect ophthalmoscopes



Vantage Plus

LED indirect ophthalmoscope

Premium optics, portability and comfort

The Vantage Plus is our most advanced indirect ophthalmoscope. Its wireless design gives you freedom to move, while still being able to view the entire retina – a must when examining larger animals.



Its LED cooler colour provides brighter, whiter illumination and longer battery life, plus its lightweight and well-balanced design offers maximum comfort for extended use.

Features:

- Unique wireless patented technology
- Lightweight, ergonomic design for enhanced comfort
- Intelligent Optical System to automatically adjust optics depending on pupil size
- 1.6x magnification with the addition of a Hi-Mag™ lens
- High contrast correlated colour temperature
- A range of filters and apertures

1205-P-1020



Spectra Iris

Indirect ophthalmoscope

Ultra-portable with exceptional optics

The Spectra Iris is a compact, lightweight, and portable indirect with big benefits for Veterinarians on the move.



It can be tucked away in its carrying case or hung around your neck when not in use - perfect when examining multiple animals at a time. Featuring best-in-class optics, it is intelligently designed with a wrap-around frame to make wear more comfortable and balanced.

Features:

- Portability and excellence in one convenient unit
- High-quality optics, precision-crafted lenses and mirrors
- Adjustable aperture slider with a variable PD Range: 48 - 76mm
- Long-lasting LED illumination
- Keeler sport wrap-around frame for maximum comfort and balance
- Flip-up optics allowing direct eye contact with patients or for writing notes

1205-P-2010



Vantage Plus Digital

Our new and improved digital BIO



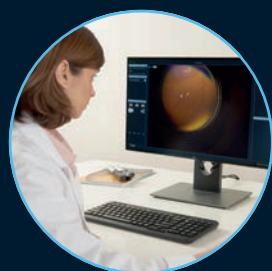
Visualise, capture and store high-resolution images and videos in real time

High-quality imaging is crucial for accurate documentation and teaching. Our Vantage Plus Digital fits seamlessly into your workflow, allowing you to capture high-resolution images and video at the click of a button. This integration simplifies the process, enhances documentation, and supports better care for animals.



Features:

- Unparalleled Vantage Plus optics and visual performance
- High-resolution 3.2 MP camera
- USB 3.0 interface delivering smooth, detailed video
- Widened field of view
- Large depth of field, up to 100mm and customised optical design to ensure stable images
- Kinexis software integration - extract still frames, detailed reports and export data to DICOM



Revolutionise your workflow with Kinexis software

Our Kinexis software is a comprehensive documentation suite designed to streamline your workflow, as well as take clear ophthalmoscopy images. It has been designed to support every aspect of your examination process.

Comprehensive, yet user friendly, Kinexis allows you to seamlessly integrate with DICOM for efficient data sharing, utilise side-by-side image comparison to monitor patient progress, and generate detailed reports with ease. This powerful software transforms how you manage and document patient care, enhancing both efficiency and diagnostic capabilities.

1205-P-1010

High-quality and reliable ultrasound diagnostic equipment



4Sight™

4-in-1 ultrasound console

Effortlessly switch between A-Scan, B-Scan, UBM and pachymetry functionality

Discover 4Sight, our powerful ultrasound console. Benefit from having all your examination results (B-Scan, UBM and pachymetry) in one powerful and easy-to-use platform. A must when working with animals; removing the need to switch between multiple instruments and systems.

Keeler 4Sight delivers industry leading clinical accuracy and unsurpassed image quality with proprietary signal processing, all within a portable tabletop device. Its easy modality data transfer means shorter exam times and is also DICOM™ Worklist compatible.

24-8000-V



Keeler Connect

Ultrasound software

Turn your Windows laptop or PC into a versatile diagnostic console

Purchase B-Scan Plus and UBM Plus individually, and use Keeler Connect software on your very own personal computer or laptop. Perfect for moving between clinics, or while on the go.



4Sight™ platform and Keeler Connect software

A single, easy-to-use software solution

Features:

- Compatible with all Keeler ultrasound probes
- Intuitive and easy to use
- State-of-the-art technology
- Consistent graphical interface for seamless integration
- Industry leading portability
- No additional licenses required



B-Scan

Ultrasound probe

High quality visualisation of the posterior segment

Combining state of the art features to bring you a reliable ultrasound diagnosis, and with built-in tools and automated functions to optimise your workflow, our B-Scan probe is the perfect tool for performing ultrasound examinations in a busy veterinary environment... in clinic, or on the go.

Features:

- **Accuracy** – Ultra-high resolution images (0.015mm) for added reassurance
- **Sensitivity** – Enhanced visualisation of ocular tumours, retinal detachments, haemorrhages, etc.
- **Clarity** – Smooth zoom technology - 2x full image zoom without distortion
- **Wide spectrum imaging** – Compiles 256 x A-Scan images over a 60deg field of view, using 12MHz frequency

24-6100-V



UBM

Ultrasound probe

Crystal clear imaging of the anterior segment

Having trust in your equipment is crucial to performing ultrasound examinations with confidence.

Capture high quality images and videos of the cornea, iris, ciliary body, zonules, crystalline lens and intraocular lens with this easy-to-use, portable device.

Features:

- **Detail** – High res images and videos, with full portability
- **Definition** – 48MHz scanning with a 60deg sweepangle and 12 measuring callipers for structure definition
- **Reliability** – Unique focal zone guide for accurate results
- **Intuitive** – Super-simple to set up and easy-to-use

24-6300-V



Pachymetry

Pachymetry
ultrasound probe or
PachPen

Accurate corneal thickness measurements

Our PachPen Vet handheld pachymeter features a superior ergonomic design that fits comfortably in any hand.

Equipped with Digital Signal Analysis to eliminate non perpendicular measurements on the cornea, it's your perfect everyday companion for on-the-go readings.

Features:

- **Intuitive** – Automatic IOP adjustment to reduce exam interruptions
- **Extensive** – Capture up to 9 measurements per corneal region
- **Trusted** – Reliable and repeatable results
- **Accommodating** – features a corneal thickness range of patients

24-5100-V



Handheld diagnostic sets



Vetscope set

Portable ophthalmoscope and otoscope set

This two in one examination kit for pets and larger animals comes in a handy carry case and is available as a wall unit or portable desk set.

Vetscope Otoscope

The Vetscope Otoscope has an open design that allows excellent visualisation for minor surgery. The swing away telescope system also allows total flexibility for the introduction of small instruments. It features:

- A larger autoclavable specula to allow easy examination, for all types of animals, time after time
- Open head system ideally suited for wax or foreign body removal
- Large 2.5x lens for clear view of aural structures and procedures under magnification
- Can be used with either permanent or disposable specula

1552-P-5015

Standard Ophthalmoscope

The Standard Ophthalmoscope is easy to use and features:

- Click through lens powers from +40D and -25D
- Two diagnostic beams - wide angle for general use and macula for more detailed views
- Swing over Red Free Filter can be used with both apertures
- Integral Soft Brow Rest

1126-P-1006



Practitioner Ophthalmoscope

Also available, with:

- A greater number of beams and filters that provide improved diagnostic capabilities
- Wide Angle, Intermediate, Macular and Slit apertures
- A Fixation Cross graticule
- Red-free (green) for visualisation of retinal blood vessels
- Cobalt-blue filter to be used alongside fluorescein dye for the assessment of corneal scratches



1127-P-1006



24-3000-V

AccuPen Vet

Handheld tonometer

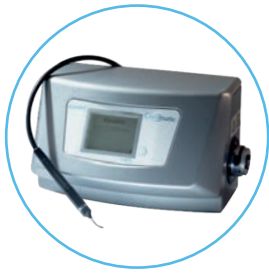
Providing accurate IOP measurements with one tap

The AccuPen is accurate, easy to use, portable and versatile, making it a must have for Veterinarians performing IOP screening. Featuring 'one tap - one reading' Gravity Offset Technology, it provides accurate IOP measurements with less calibration in any testing position. Featuring an ergonomic design combined with sighting lines, it provides easy visualisation of the cornea.

Features:

- Ultra-portable and easy to use
- Gravity offset technology for fast and accurate results in any position
- Micro-strain gauge technology for reproducible results
- Contoured moulding for a comfortable fit in any hand
- Long lasting lithium battery (up to 15,000 readings)
- Built in IOP Correction Calculator adjusts IOP based on central corneal thickness

Cryo consoles and probes



Cryomatic MKII console

Delivering quality and reliability to your cryosurgery

Delivering automation and versatility, with a coupling system compatible with single-use or reusable probes without the need for an adaptor. The console automatically detects the type of probe in use and adjusts internal parameters to reduce the steps required to conduct ophthalmic cryosurgery.

Features:

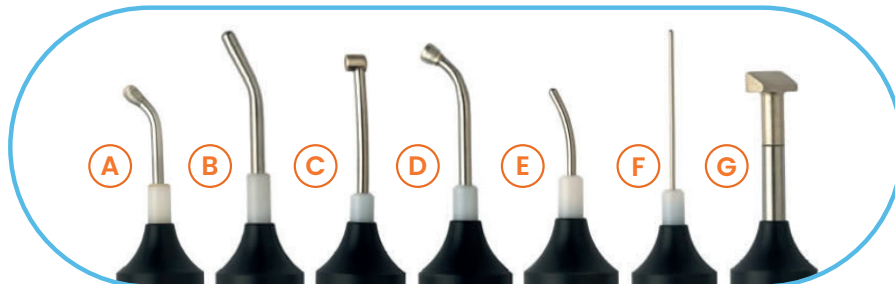
- Convenient, short purge cycle
- Automatically detects and adjusts to your probe type
- Back-flush facility to remove debris and moisture
- No purge cycle for single-use probes
- Rapid freeze and quick defrost
- All probes are rigorously tested to offer optimal performance, reliability and safety

2509-P-1010

Keeler cryo probes

The Cryomatic MKII is compatible with seven reusable probes which are used to treat a variety of pathologies as well as Keeler's single-use probe reducing the need for sterilisation and improving scalability.

Reusable probes



- (A) Standard retinal probe
- (B) Extended retinal probe
- (C) Mid-reach retinal probe
- (D) Glaucoma probe*
- (E) Curved cataract probe*
- (F) Intra-vitreous probe*
- (G) Collins trichiasis probe*

*Some probes require a special order process. Please ask a team member for more details on this ordering process.

Please see website for individual product codes

Single-use probes



Features:

- Sterile probe, with fail-safe auto-defrost feature
- Designed in collaboration with clinicians for quality, performance and precision
- Ergonomic design includes a curved tip and orientation pip

2509-P-8033

Visit keelerglobal.com for our full range including:



BIO



Slit lamps



Ultrasound



Handhelds



Clinical

Contact details for your local Keeler distributor:



 **Keeler**
A **Halma** company

Contact us

Phone: +44 (0)1753 857 177

Email: sales@keeler.co.uk

UK
CA 0120 **CE** 1639

EU **REP**

Keeler Europe Distribution, S.L.
Colom, 453, nau D50
08223 Terrassa, Spain

CH **REP**

Medicel AG
Domierstrasse 11
CH-9423 Altenrhein, Switzerland



Keeler Ltd. Clewer Hill Road,
Windsor, SL4 4AA



CE 2797

EU **REP**

EMERGO EUROPE
Westervoortsedijk 60
6827 AT Amherm, The Netherlands

CH **REP**

Medicel AG
Domierstrasse 11
CH-9423 Altenrhein, Switzerland

UK **REP**

Clewer Hill Road
Windsor, SL4 4AA
United Kingdom



Keeler USA, 3222 Phoenixville
Pike, Malvern, PA 19355